

Altona, Laverton/Altona Meadows and Point Cook
Community Bank® branches

Altona, Laverton, Altona Meadows and Point Cook Community Grants Program

Applications from community organisations are sought to develop and enhance Altona, Laverton, Altona Meadows and Point Cook

Applications that address the following areas will receive priority:

- Family, children and youth initiatives
- Public health programs and services
- Community capacity building projects
- Public education (including tertiary education, school buildings and libraries)
- Innovative community services
- Cultural and arts initiatives
- Aged care services
- Disability support projects
- Environmental projects

Who is eligible for support?

Organisations, clubs or community groups that apply:

- Must be recognised as an endorsed charity by the ATO with Deductible Gift Recipient Status or be a not-for-profit organisation
- Should have an ABN

Priority will be given to organisations based in the Altona, Laverton, Altona Meadows & Point Cook areas.

How to apply

Call 1300 304 541

8.30am – 5.00pm EST Monday to Friday

Visit Altona, Laverton/Altona Meadows and Point Cook **Community Bank®** branches

Email

foundation@bendigobank.com.au

Visit our website

www.bendigobank.com.au/foundation

Applications close:

Thursday 15 September 2011

Information session

Thursday 11 August 2011

Altona Sports Club

11 Altona Rd, Altona

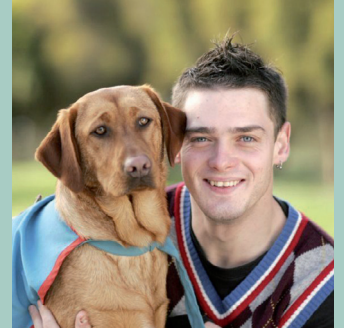
at 7.00pm

RSVP

Tuesday 9 August 2011 to

Sarah Stapleton on 9369 8434 or

sarah@hobsonsbycfs.com.au



The Altona, Laverton, Altona Meadows and Point Cook Community Grants Program is a management account of Community Enterprise™ Charitable Fund. Community Enterprise™ Foundation ABN 69 694 230 518. Community Enterprise™ Charitable Fund ABN 12 102 649 968. The Bendigo Centre, Bendigo, VIC, 3550. (134687_v10) (20/06/2011)